

MKS Robin

Overview

MKS Robin is created by MAKER BASE(MKS),which assemble with 2.8/3.2inch TFT touch screen already .

Also, it's easy for users to configure the firmware and update via SD .

This controller is good for 3D printer manufactories.

Features

- 1.Use 32bit 32-bit high-speed ARM chip .
- 2.Assemble with 2.8/3.2inch TFT touch screen which is easy to use sensitively.
- 3.The firmware is self-developed, which is easy to flash and update via sd card.
- 4.Support custom logo and user-defined.
- 5.Support stepper driver replacement. Such as A4988,DRV8825,TMC2100,as well as TB6600,etc.
- 6.The PCB adopts 4 layers in high quality and perfect cooling.
- 7.Use dedicated power chip, support 12/24V input.
- 8.Support outage printing and blanking feeding detection.(need adding

Website: www.makerbase.com.cn Database: <https://github.com/makerbase-mks>

E-mail: 2228481602@qq.com ;529442067@qq.com; 4164049@qq.com;

Address: Room C407,He Jing Industrial Design Science and Technology Park,No. 23 Guangzhou Road, Liwan District East Sha Industrial Zone, Guangzhou, PRC.

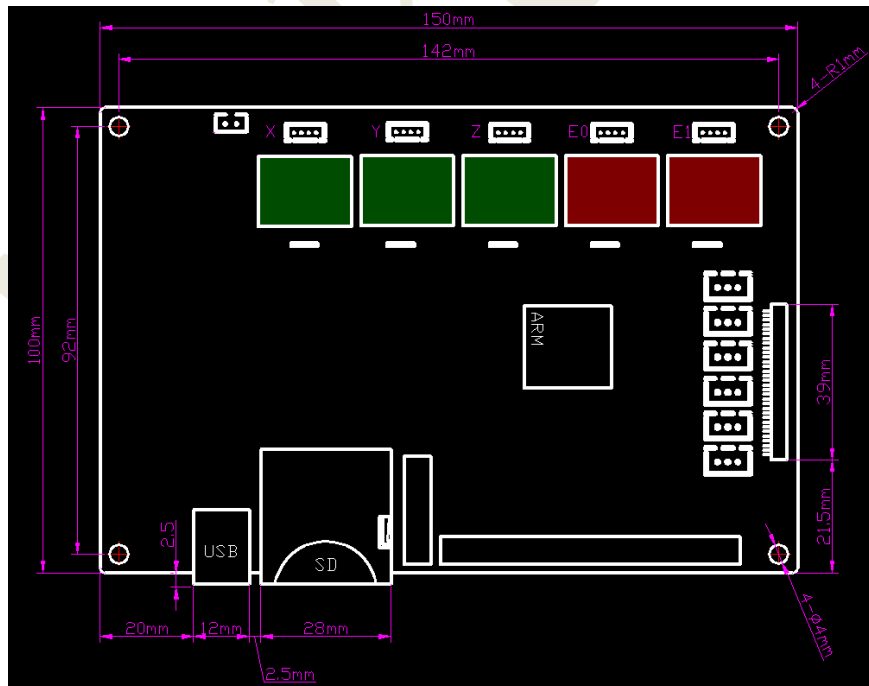
module)

9.Better MOSFET, better cooling.

Specification in Mainboard

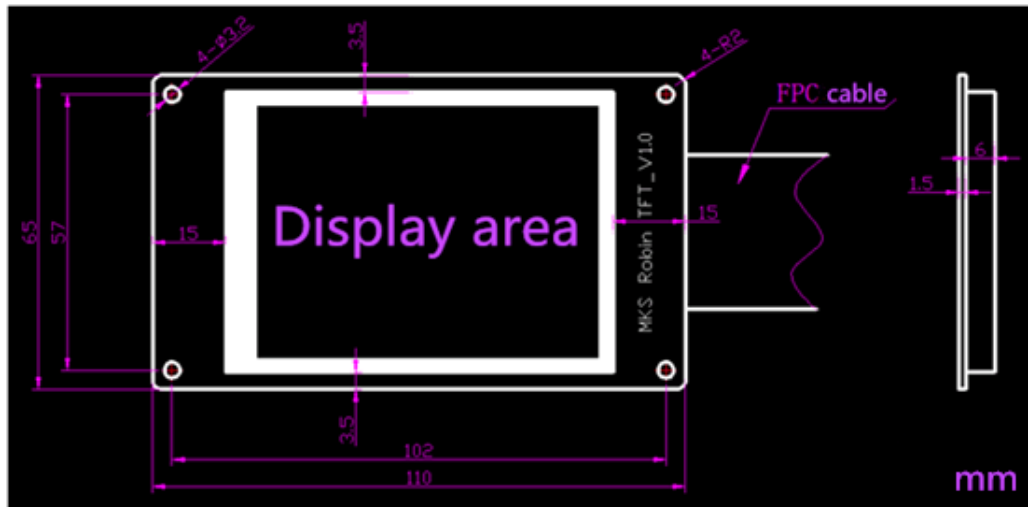
Model	MKS Robin	Micro-processor	STM32
Size	150mm*100mm	Hole size	142mm*92mm
Voltage&Current Input	12~24V 5A~15A	Stepper driver	A4988,DRV8825, TMC2100,TB6600
Temperature sensor	NTC100K	Display	TFT2.8/TFT3.2
File formats	G-code	Machine type	XYZ/delta/kossel/ Ultimaker
Recommended software	Cura,Simplify3D Pronterface , Repetier-Host	Wireless	WIFI

MKS Robin Board Dimension



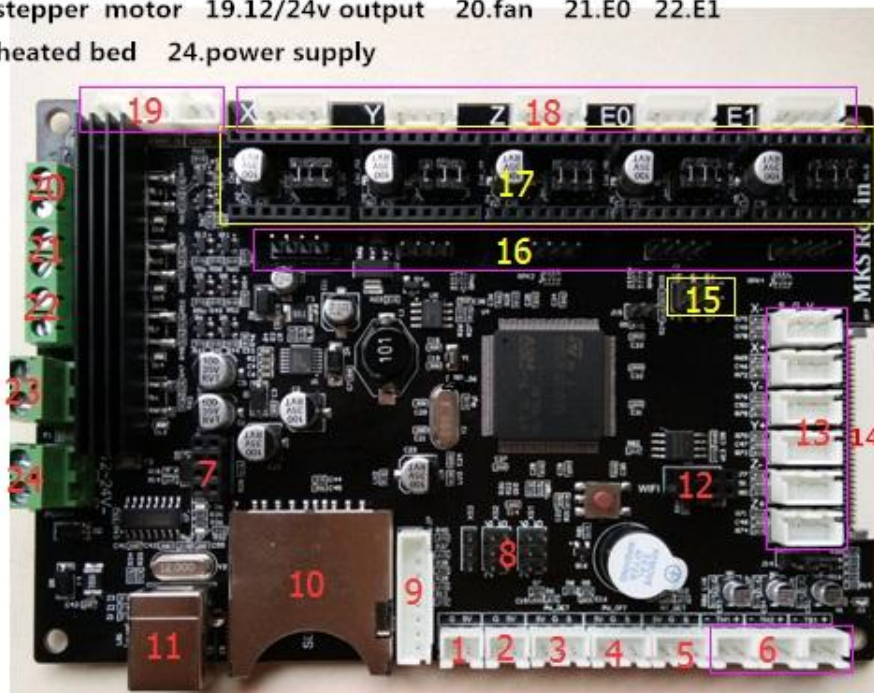
Website: www.makerbase.com.cn Database: <https://github.com/makerbase-mks>
 E-mail: 2228481602@qq.com ;529442067@qq.com; 4164049@qq.com;
 Address: Room C407,He Jing Industrial Design Science and Technology Park,No. 23 Guangzhou Road, Liwan District East Sha Industrial Zone, Guangzhou, PRC.

MKS Robin TFT display dimension



Wiring Connector

- 15.Bootloader 16.for high current external drivers 17.stepper driver
- 18.stepper motor 19.12/24v output 20.fan 21.E0 22.E1
- 23.heated bed 24.power supply



- 1,2. 5V output 3.MKS DET(UPS) 4.MKS PWC 6.E0,E1 thermistor 7.MKS DET
- 5.filament interrupt detection module 8.expansion PIN for steering engine,ect
- 9.SD expander 10.SD 11.USB 12.WIFI 13.endstop 14.TFT screen

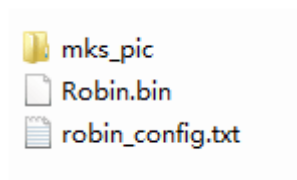
Website: www.makerbase.com.cn Database: <https://github.com/makerbase-mks>
 E-mail: 2228481602@qq.com ;529442067@qq.com; 4164049@qq.com;
 Address: Room C407,He Jing Industrial Design Science and Technology Park,No. 23 Guangzhou Road, Liwan District East Sha Industrial Zone, Guangzhou, PRC.

Notice

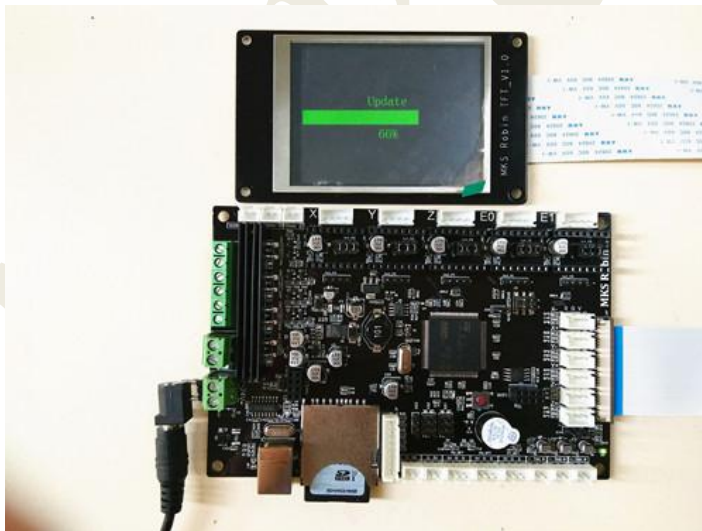
- 1.Please watch out the power polarity .
- 2.Please don't assemble drivers and motors when power on.

Firmware Update

- 1.Copy following documents to the root of SD card.(The file name isn't allowed to be edited.)



- 2.Then plug SD card to the board, and power on. It will update automatically.



Firmware is in our following github.

Website: www.makerbase.com.cn Database: <https://github.com/makerbase-mks>

E-mail: 2228481602@qq.com ;529442067@qq.com; 4164049@qq.com;

Address: Room C407,He Jing Industrial Design Science and Technology Park,No. 23 Guangzhou Road, Liwan District East Sha Industrial Zone, Guangzhou, PRC.

<https://github.com/makerbase-mks/MKS-Robin>

MakerBase

Website: www.makerbase.com.cn Database: <https://github.com/makerbase-mks>

E-mail: 2228481602@qq.com ; 529442067@qq.com; 4164049@qq.com;

Address: Room C407, He Jing Industrial Design Science and Technology Park, No. 23 Guangzhou Road, Liwan District East Sha Industrial Zone, Guangzhou, PRC.